

Köke'e & Waimea Canyon State Parks Master Plan & EIS

Presentation of Alternatives



State of Hawai'i
Department of Land & Natural Resources
Division of State Parks

October 14, 2003

Project Assignment



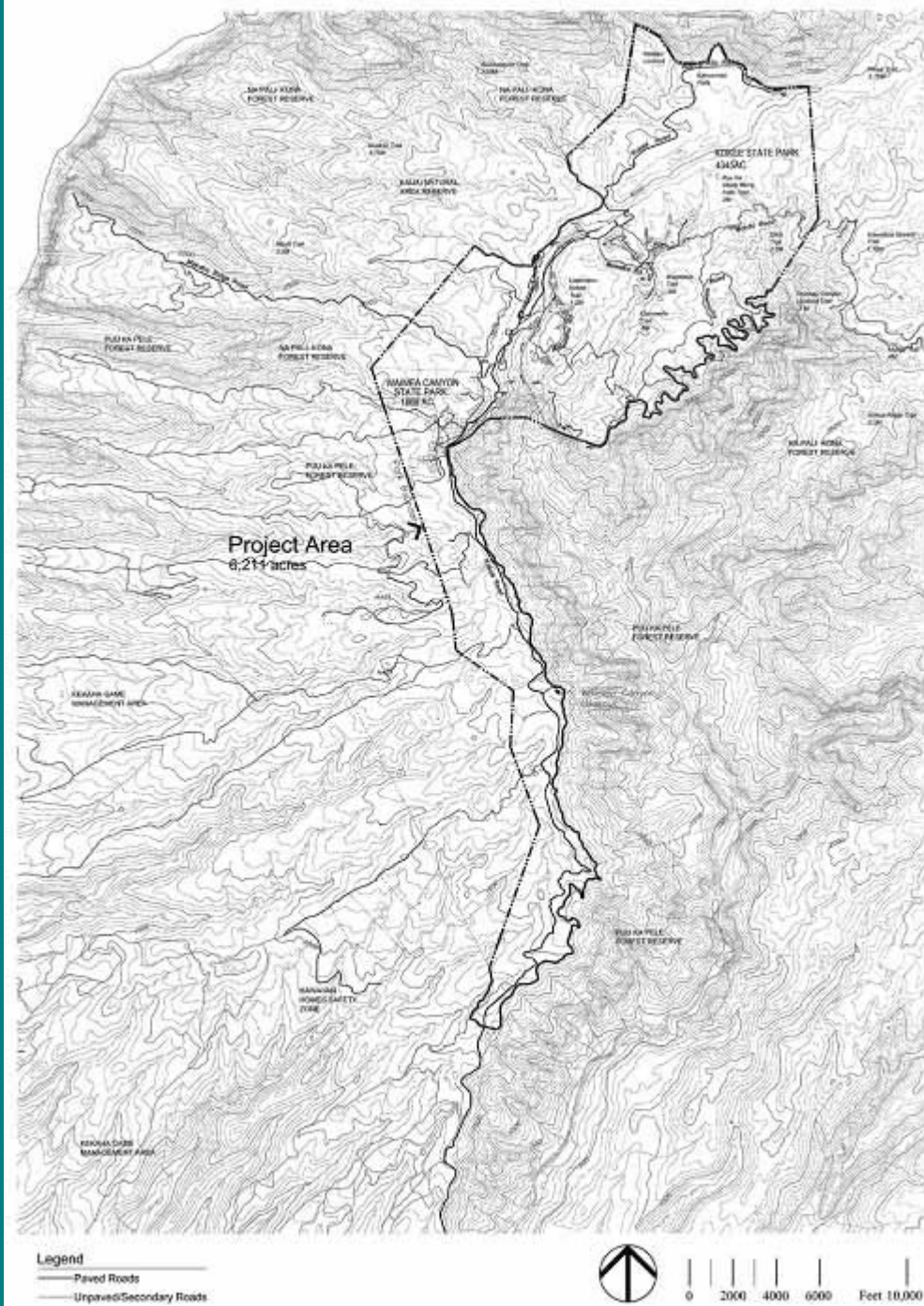
- **Master Plan**
 - Waimea Canyon State Park
 - Kokee State Park
 - State Land Adjoining the Park
- **Environmental Impact Statement**
 - Meet Requirement of Chapter 343, Hawaii Revised Statutes
 - Cultural Impact Assessment

Project Background

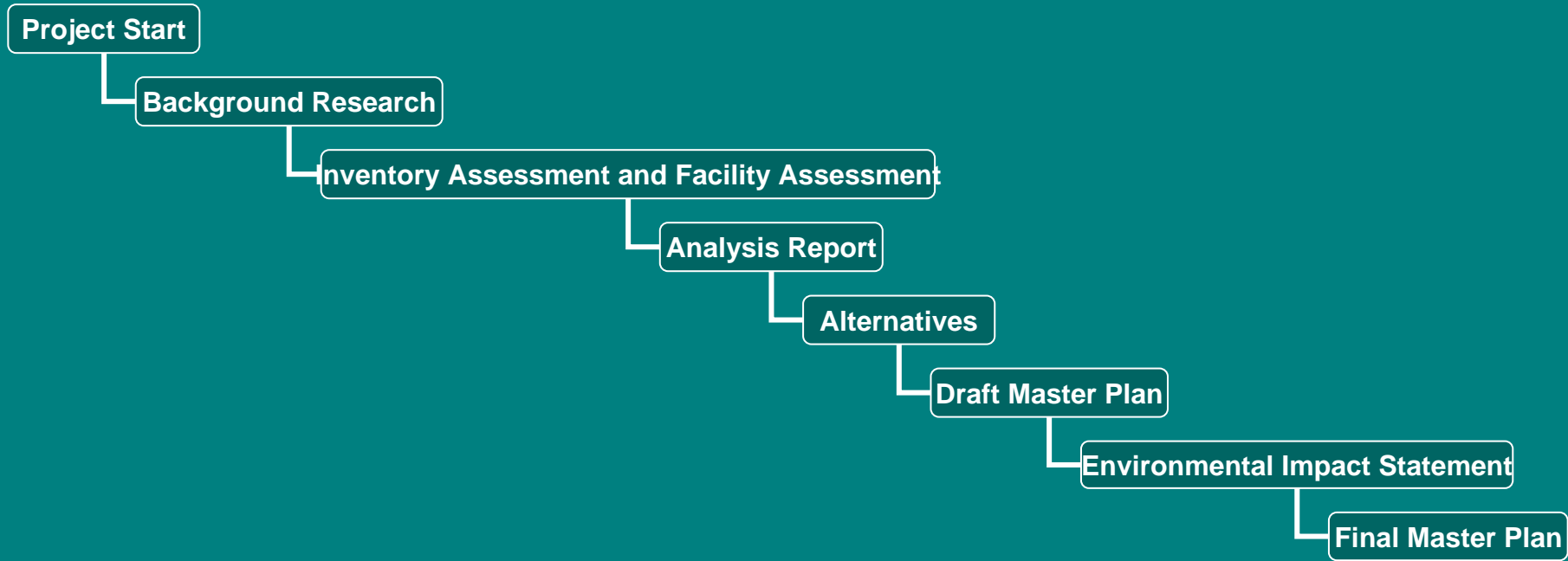
- Over 500,000 visitors annually
- Residential lease expire 2005-2006
- Area is being designated a critical habitat
- Integrated management approach



STUDY AREA MAP



MASTER PLAN AND EIS PROCESS



Project Tasks

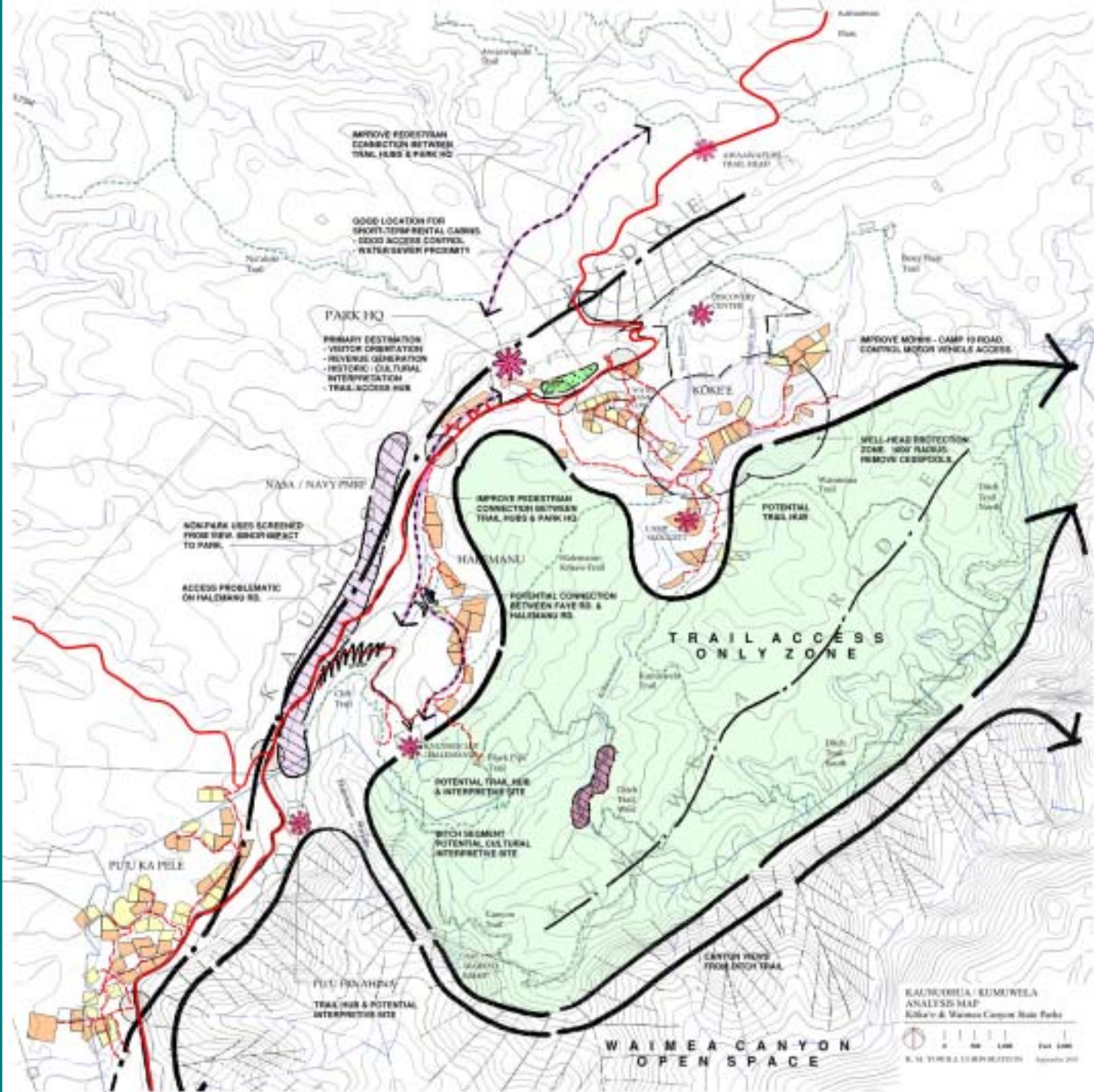
- Background Studies
 - Inventory Assessment
 - Facility Assessment
 - Special Studies
- Analysis
- Alternatives Development
- Draft Master Plan – Spring 2004
- Draft EIS – Summer 2004
- Final EIS – Fall 2004
- Final Master Plan – Spring 2005



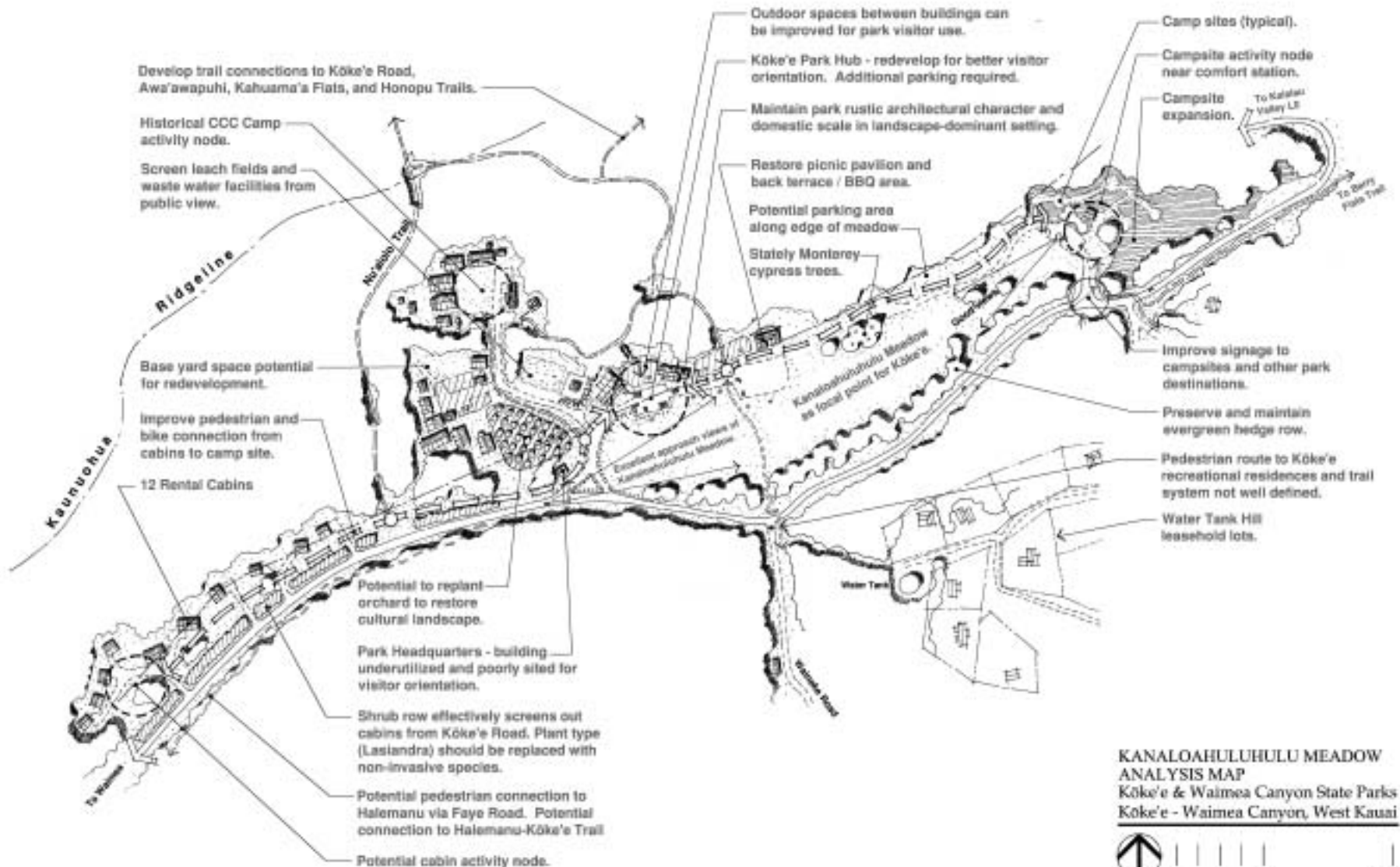
Study Area Analysis



Park Core Analysis



Kanaloahuluhulu Analysis

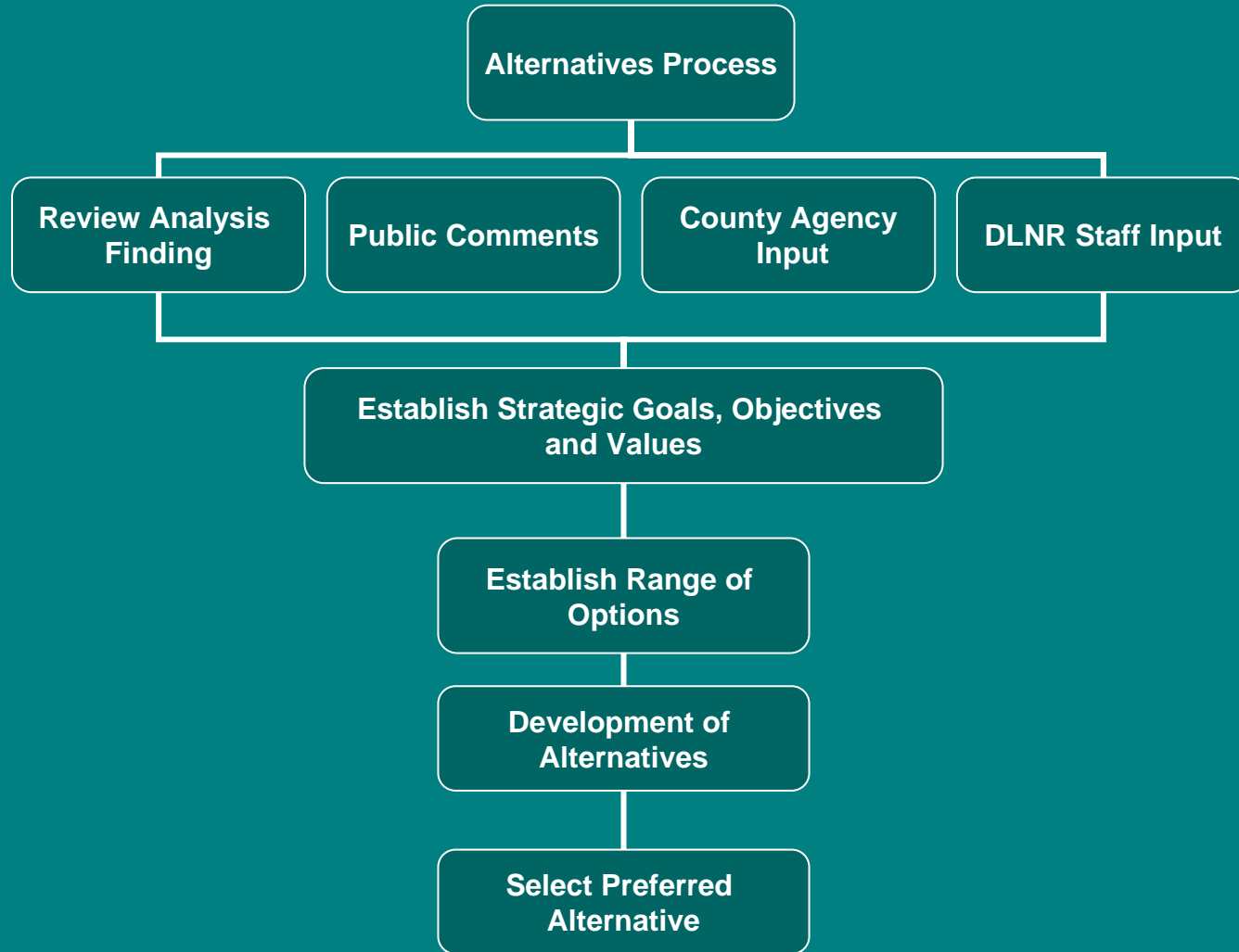


**KANALOAHULUHULU MEADOW
ANALYSIS MAP**
Kōke'e & Waimea Canyon State Parks
Kōke'e - Waimea Canyon, West Kauai

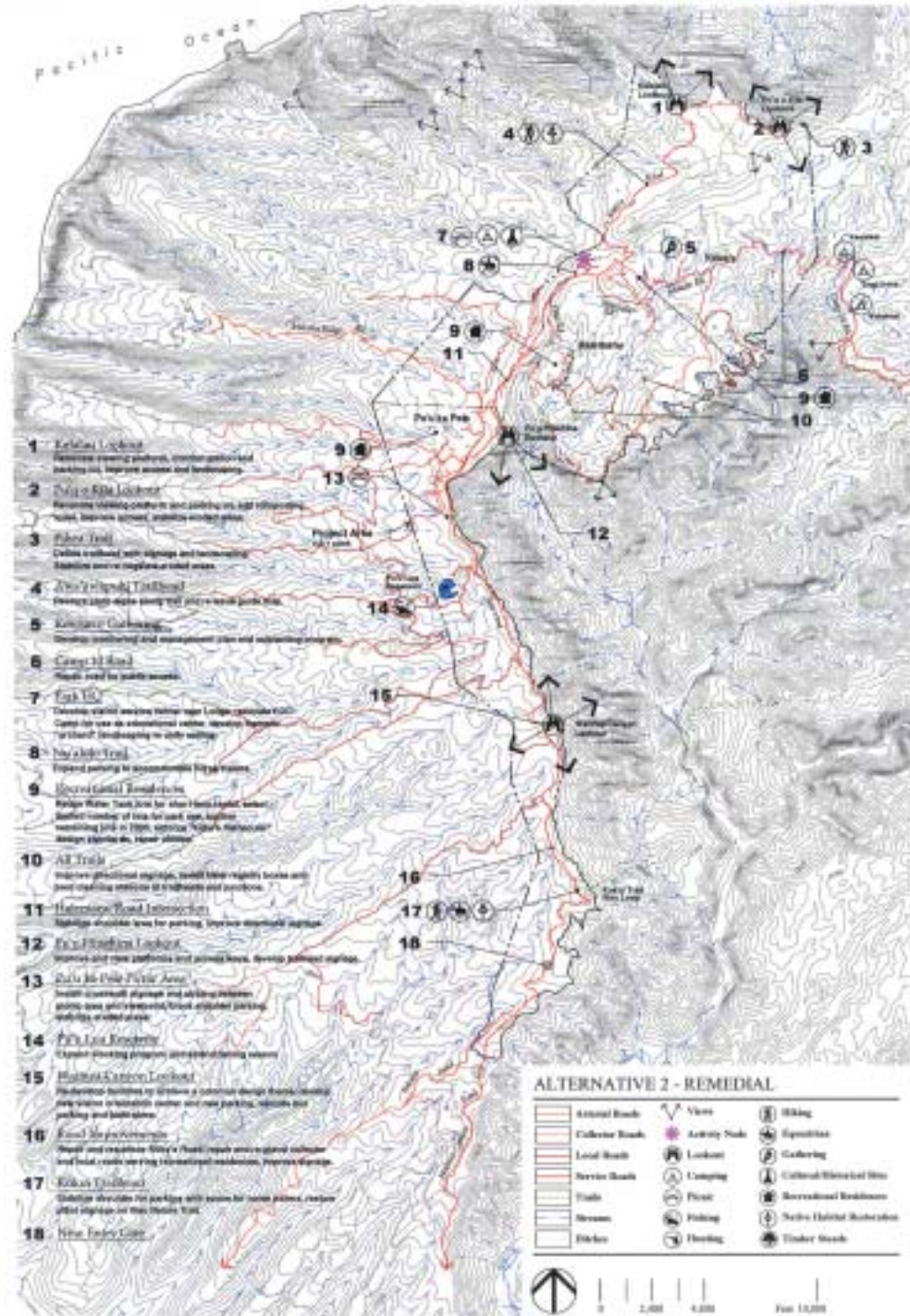


Feet 400

Alternative Process



Alternative 2 Remedial Plan

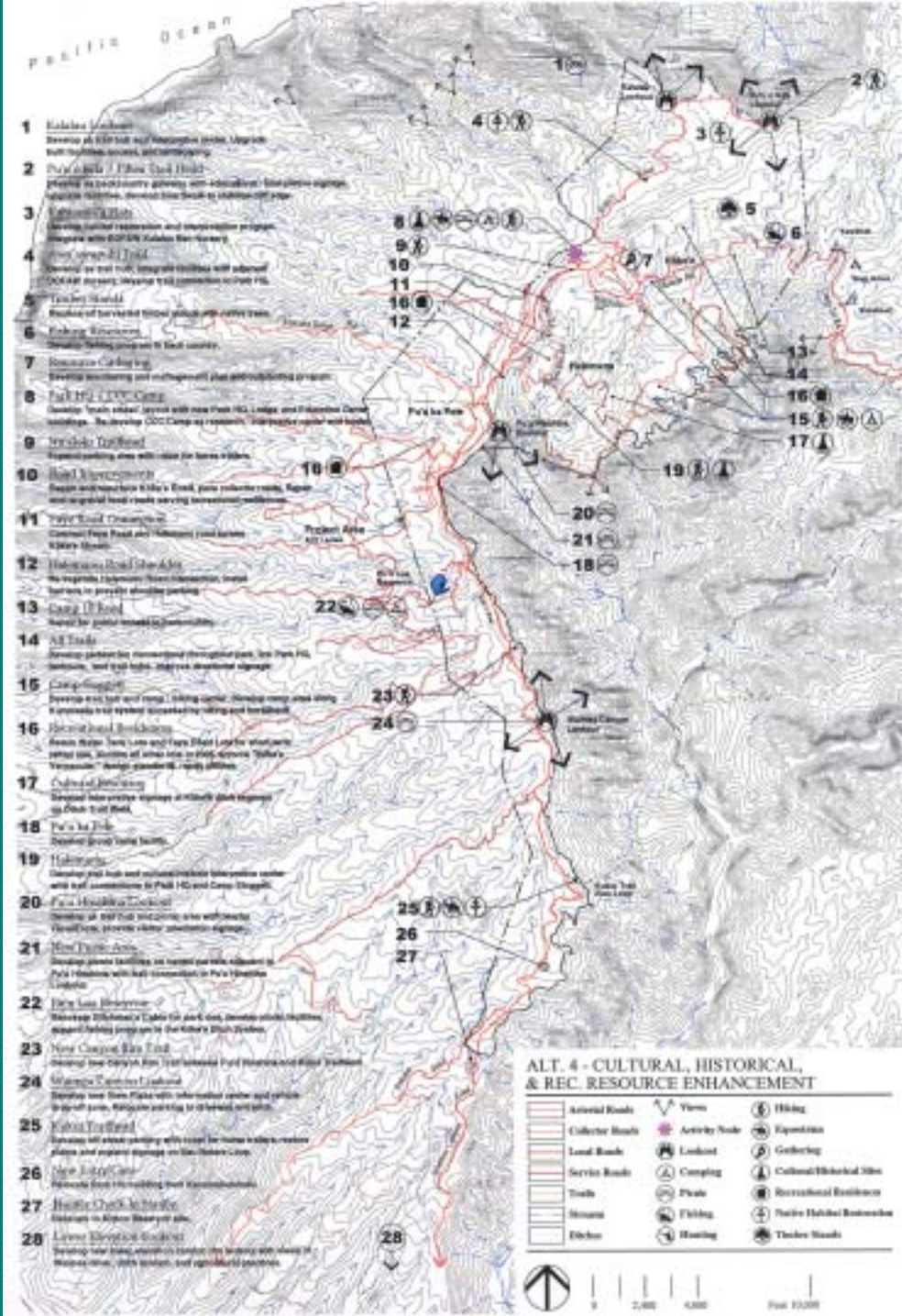


Alternative 3 Conservation Plan



- 1 **Whisper Lookout**
Develop two high-altitude viewing points, integrate with
Columbus' Flats and Kaniakani Falls, interpret
landscape associated with P.H.
- 2 **Kaniakani Road Improvements**
Improve drainage and road surface conditions.
- 3 **Curvilinear Lookout - "Piles" Trail**
Develop an east-west gateway - include existing
historic sites, interpret "Piles" area to include
scenic views.
- 4 **Kaniakani Falls**
Improve drainage on main road, restore native riparian forest on main
and tributary.
- 5 **Amakaniakani Lookout**
Develop trail with interpretive facilities and overlook parking
with nearby viewpoints, integrate with OCEAN highway.
- 6 **Timber Stands**
Restore riparian forest stands with native trees.
- 7 **Resource Gathering**
Develop interpretive site management plan and
supporting signage.
- 8 **Peak 182**
Develop new visitor services building near Lodge with interpretive
facilities and picnic facilities, include OCEAN Center as a
demonstration of forest and education center with residential
facilities.
- 9 **Canopy Offroad**
Install sign to restrict vehicle access to backcountry trail.
- 10 **Downer's eye Signpost**
Develop a pull-out and interpretive "gateway" to backcountry area.
- 11 **All Trails**
Develop interpretive signage to highlight historic preservation areas
near riparian forest and other scenic features to hikers.
- 12 **Recreational Buildings**
Improve facilities with the state building, include picnic tables,
and a "Piles" interpretive signpost.
- 13 **Trail Road Connectors**
Improve trailhead and interpretive signs
along a stream.
- 14 **Halekani Road Improvements**
Stabilize roadside area for parking, install
interpretive signage.
- 15 **Peak 182 Interpretive Lookout**
Develop interpretive and picnic facilities,
improve access paths, interpretive
viewing platform, develop
interpretive signage.
- 16 **Peak 182 View - Trail**
Develop interpretive area, install interpretive signage.
- 17 **Scenic Viewing**
Develop parking to overlook, to include interpretive viewing
platform and picnic facilities.
- 18 **Road Interpretive**
Develop interpretive area along road, include
interpretive and trail route viewing platform,
facilities, interpretive signage.
- 19 **Halekani Curvilinear Lookout**
Develop interpretive and picnic facilities,
improve access paths, interpretive
viewing platform, develop
interpretive signage.
- 20 **Kaniakani "Sun" Nature Trail**
Develop off-road parking with view for scenic views, add
interpretive signage, nature plantings and interpretive signage.
- 21 **Interpretive Tower**
Construct "tower" about 100 feet high to provide panoramic views.
- 22 **Trail Entry Gate**

Alternative 4 Enhanced Recreation & Cultural Resources Plan



Recreation Residences - Alternatives

- **Alternative 1- Status Quo**
- **Alternative 2 – Enhanced Plan**
 - Reserve Tank Lots for Short-term rental
 - Remaining lots to be leased
 - Historic design guides to be established
- **Alternative 3 – Conservation Plan**
 - Reserve Tank Lots for Short-term rental
 - Remaining lots to be leased
 - Historic design guides to be established
 - Remove non-contributing residences
- **Alternative 4 – Enhanced Recreation Plan**
 - Reserve Tank lots & Faye Road lots for short-term rental
 - Remaining lots to be leased
 - Historic design guides to be established
 - Remove non-contributing residences
 - Allow new “historic” structure on vacant lots
- **Alternative 5 – Short-Term Rental**
 - Convert all residences to short-term rental managed by the State or vendor
 - Historic design guides to be established
 - Remove non-contributing residences

Recreation Residences

- **Alternative 1- Status Quo**
 - All lots in long-term lease
 - Basic improvements to utilities and infrastructure
 - Enforcement of lease conditions (fire breaks, etc.)

Recreation Residences

- **Alternative 2 – Remedial Plan**
 - Reserve Tank Lots for Short-term rental
 - Remaining lots to be leased
 - Historic design guides to be established

Recreation Residences

- **Alternative 3 – Conservation Plan**
 - Reserve Tank Lots for Short-term rental
 - Remaining lots to be leased
 - Historic design guides to be established
 - Remove non-historic residences

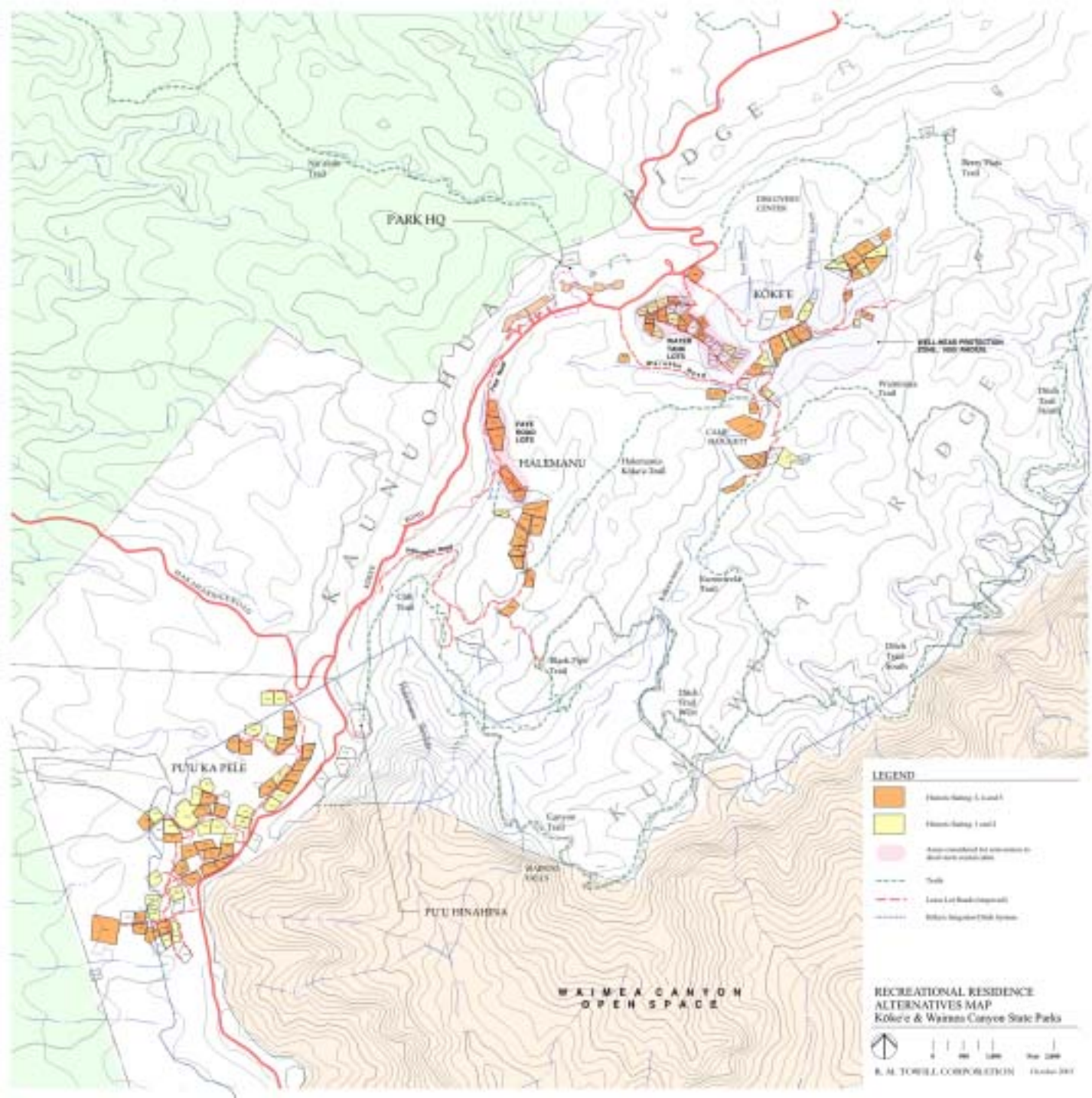
Recreation Residences

- **Alternative 4 – Enhanced Recreation Plan**
 - Reserve Tank lots & Faye Road lots for short-term rental
 - Remaining lots to be leased
 - Historic design guides to be established
 - Remove non-contributing residences
 - Allow new “historic” structure on vacant lots

Recreation Residences

- **Alternative 5 – Short-Term Rental**
 - Convert all residences to short-term rental managed by the State or vendor
 - Historic design guides to be established
 - Remove non-contributing residences

Recreational Residences Alternatives Map



Goals for Next Review



- Next Public Informational Meeting:
 - February 2004
- Goals for next review
 - Review Draft Master Plan
 - Begin EIS process
 - Issues that will be resolved
- Notice to be sent out - sign-in and provide email address or fax number

Public Involvement Opportunities

- Informational Meetings
 - 5 - scheduled
 - Opportunity to comments on plans
- Interviews
- Contact the Planning Team / DLNR
- Public Hearings
 - DLNR Land Board
- EIS Public Comments

Contact Information

- **Division of State Parks**

Attn: Lauren Tanaka

P.O. Box 621

Honolulu, HI 96809

Lauren_A_Tanaka@hawaii.gov